

GOOGLE EARTH PRO

INTRODUCTION and
Creation of KML Layers

Prepared by
APCDMA - PMU
08 August 2022



Google Earth

OUTLINE

- Introduction
- Download and Installation of Google Earth Pro in PC, Mobile etc.
- Creation of KML Layers for ULB jurisdiction in AP
 - Survey Ward Boundary
 - Revenue Ward Boundary
 - Election Ward Boundary
 - Ward Secretariat Boundary

Google Earth – An Introduction

- ❑ **Google Earth** is a computer program that renders a 3D representation of Earth based primarily on satellite imagery. The program maps the Earth by superimposing satellite images, aerial photography, and GIS data onto a 3D globe, allowing users to see cities and landscapes from various angles.
- ❑ Google Earth is able to show various kinds of images overlaid on the surface of the earth and is also a Web Map Service client.
- ❑ **Google Earth Pro** is a free computer program for users with advanced feature needs which Import and export GIS data, and go back in time with historical imagery
- ❑ Can explore the globe by entering addresses and coordinates, or by using a keyboard or mouse.
- ❑ Can also be downloaded on a smartphone or tablet, using a touch screen or stylus to navigate.
- ❑ May use the program to add their own data using **Keyhole Markup Language(KML)** and also provides a series of other tools through the desktop application, including a measure distance tool.
- ❑ The web-based version of Google Earth also includes **Voyager**, a feature that periodically adds in-program tours, often presented by scientists and documentarians.

Google Earth Pro: System Configuration

In order for Google Earth Pro to run on your computer, you must have all minimum system requirements.

Windows System Configuration

Minimum:

- **Operating System: Windows 7**
- **CPU: 1GHz or faster**
- **System Memory (RAM): 2GB**
- **Hard Disk: 2GB available space**
- **Internet Connection**
- **Graphics Processor: DirectX 9 or OpenGL 1.4 compatible**

Recommended:

- **Operating System: Windows 7 or higher**
- **CPU: 2GHz dual-core or faster**
- **System Memory (RAM): 4GB**
- **Hard Disk: 4GB available space**
- **High-Speed Internet Connection**
- **Graphics Processor: DirectX 11 or OpenGL 2.0 compatible**

What is KML?

- ❑ **Keyhole Mark-up Language (KML)** is an XML notation for expressing geographic annotation and visualization within internet based, two-dimensional maps and three-dimensional Earth browsers
- ❑ KML is a way of displaying geographical data in an Earth Browser

KML Functions

- ❑ KML includes features that allow it to display:
 - ❑ Place marks
 - ❑ Images
 - ❑ Polygons
 - ❑ 3D models
 - ❑ Textual descriptions



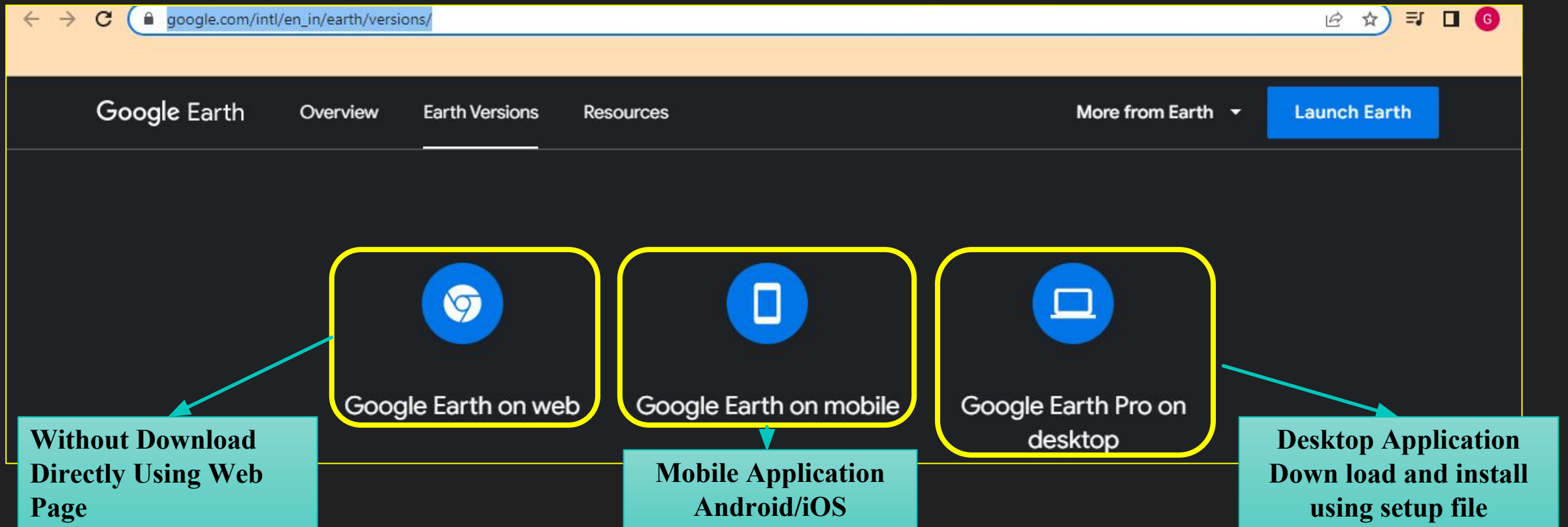
How to Download Google Earth Pro

To download and install Google Earth Pro on your computer

- Open the below link

https://www.google.com/intl/en_in/earth/versions/

- Below webpage will be opened showing the Google Earth versions



The screenshot shows the Google Earth website's 'Earth Versions' page. The browser's address bar displays the URL https://www.google.com/intl/en_in/earth/versions/. The page features a navigation bar with 'Google Earth', 'Overview', 'Earth Versions' (selected), and 'Resources'. On the right, there is a 'More from Earth' dropdown and a 'Launch Earth' button. The main content area displays three options, each in a rounded rectangle with a blue icon: 'Google Earth on web' (web icon), 'Google Earth on mobile' (mobile icon), and 'Google Earth Pro on desktop' (desktop icon). Three red callout boxes with arrows provide additional information: the first points to the web option with the text 'Without Download Directly Using Web Page'; the second points to the mobile option with the text 'Mobile Application Android/iOS'; and the third points to the desktop option with the text 'Desktop Application Down load and install using setup file'.

Google Earth Overview **Earth Versions** Resources More from Earth ▾ **Launch Earth**

Google Earth on web Google Earth on mobile Google Earth Pro on desktop

Without Download Directly Using Web Page

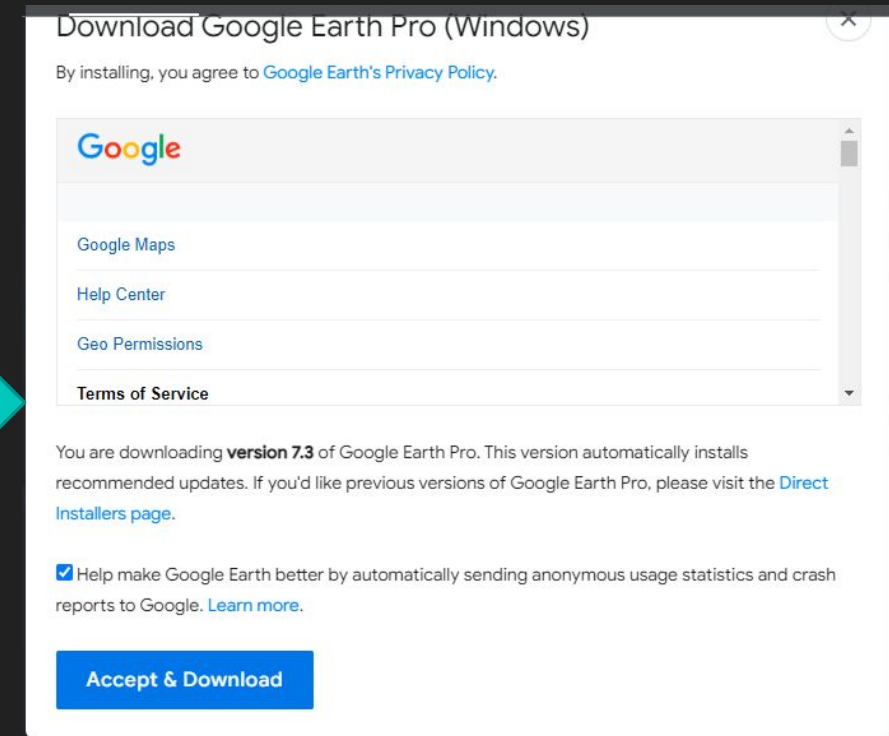
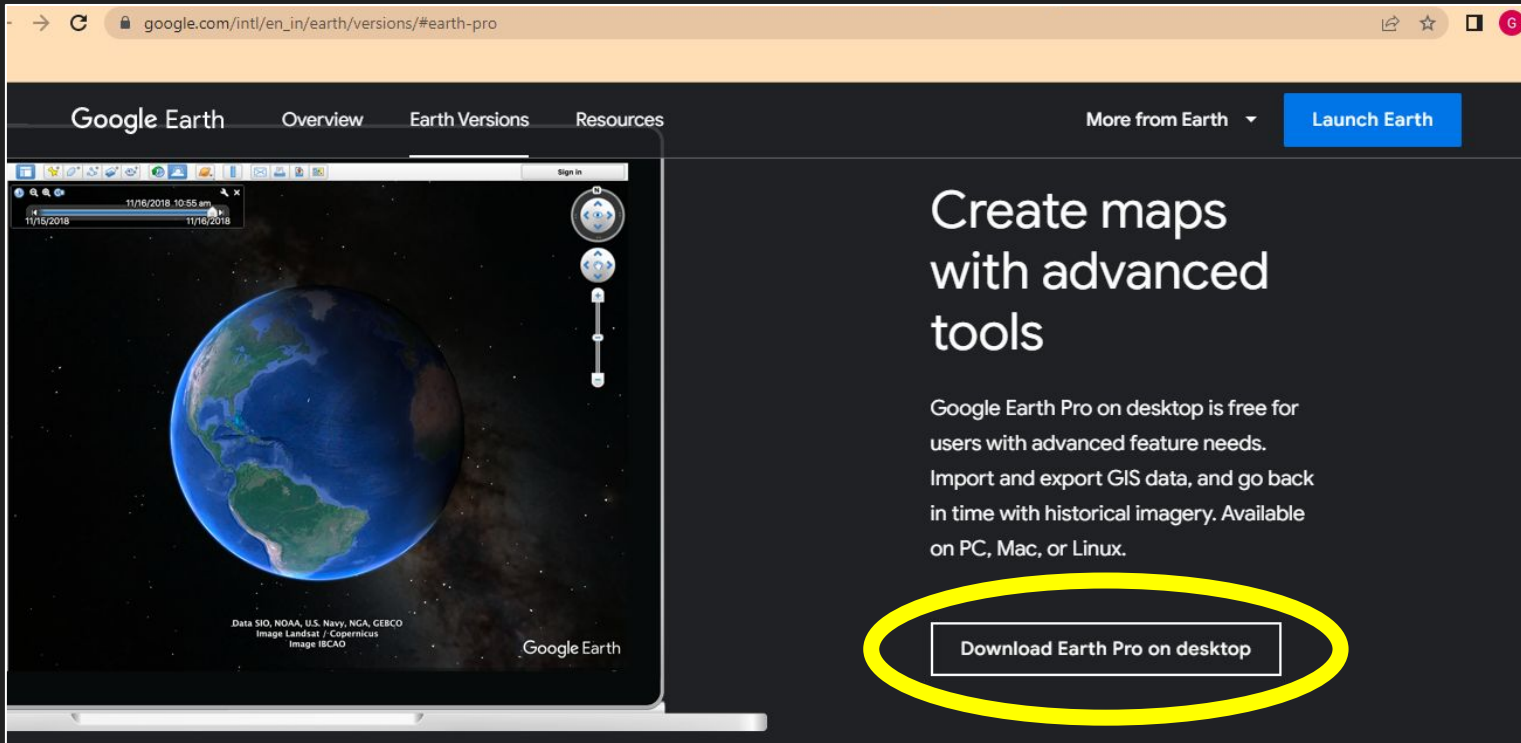
Mobile Application Android/iOS

Desktop Application Down load and install using setup file

Google Earth Pro Desktop/PC Application

Installation

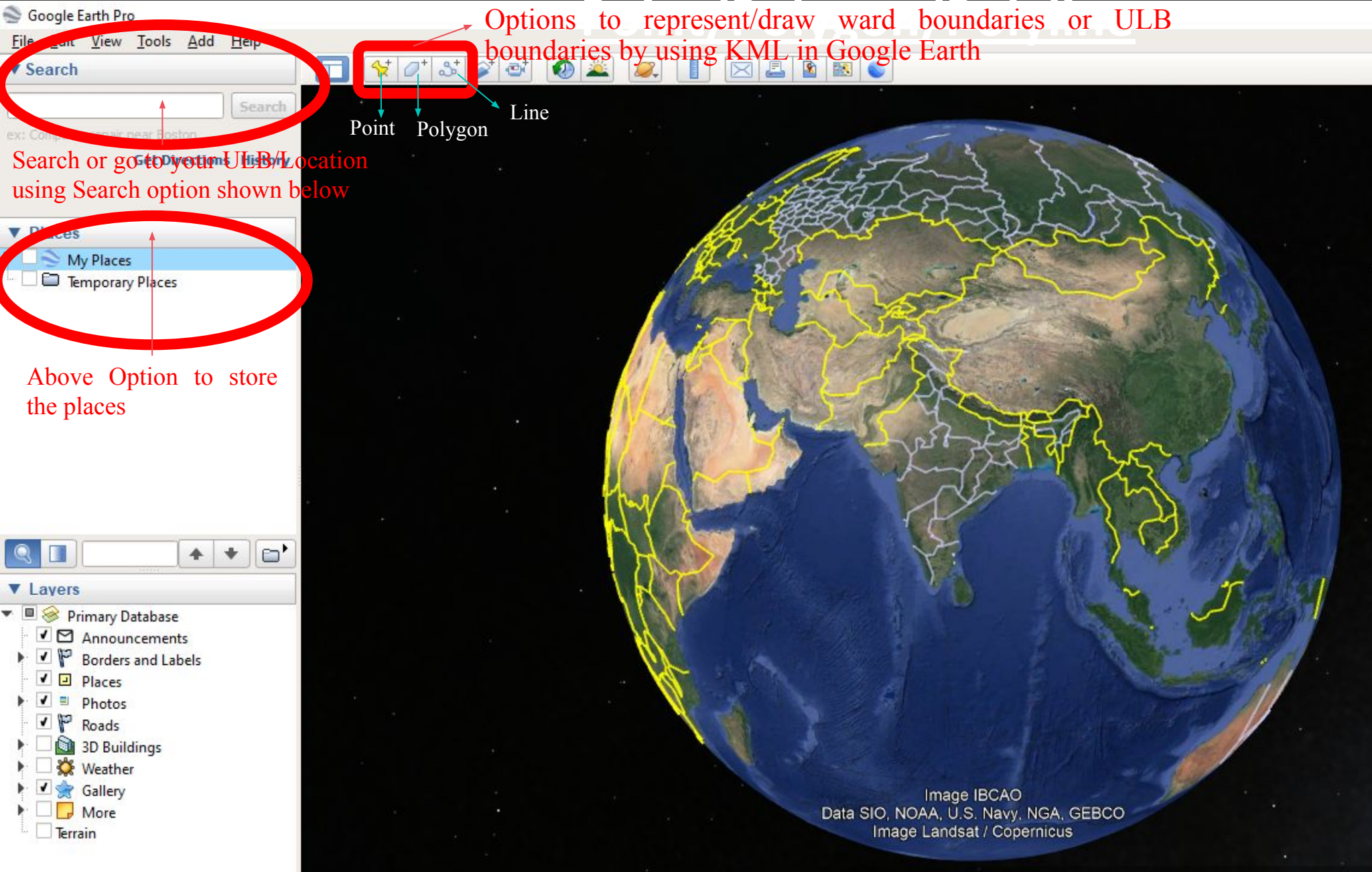
Below webpage allows to download the set up file to install the software



The following setup file downloaded to install the software

GoogleEarthProSetup.exe

How to Draw a



Basic Spatial Elements - Points, Lines and Polygons

Points/Placemark



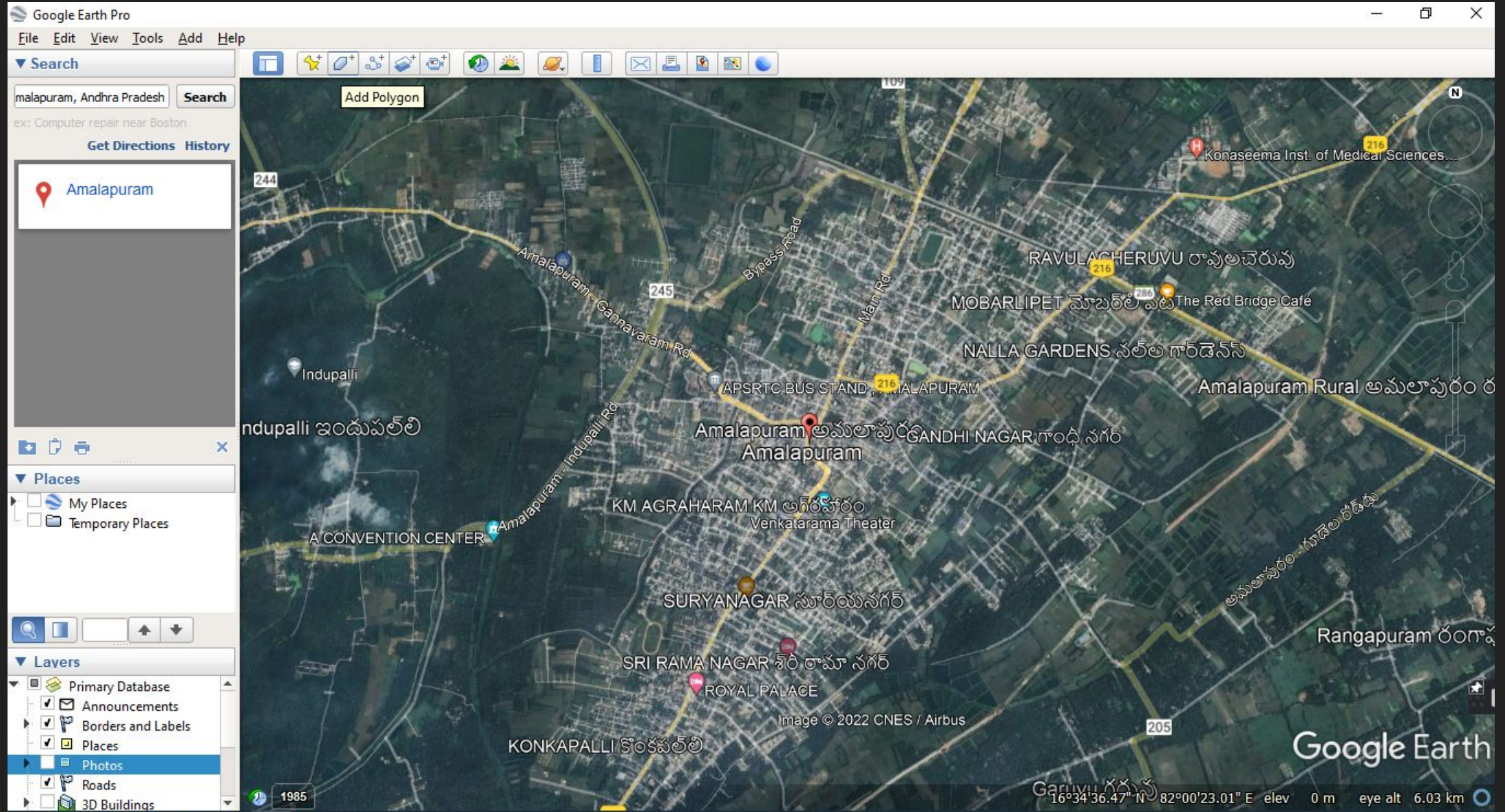
Polyline



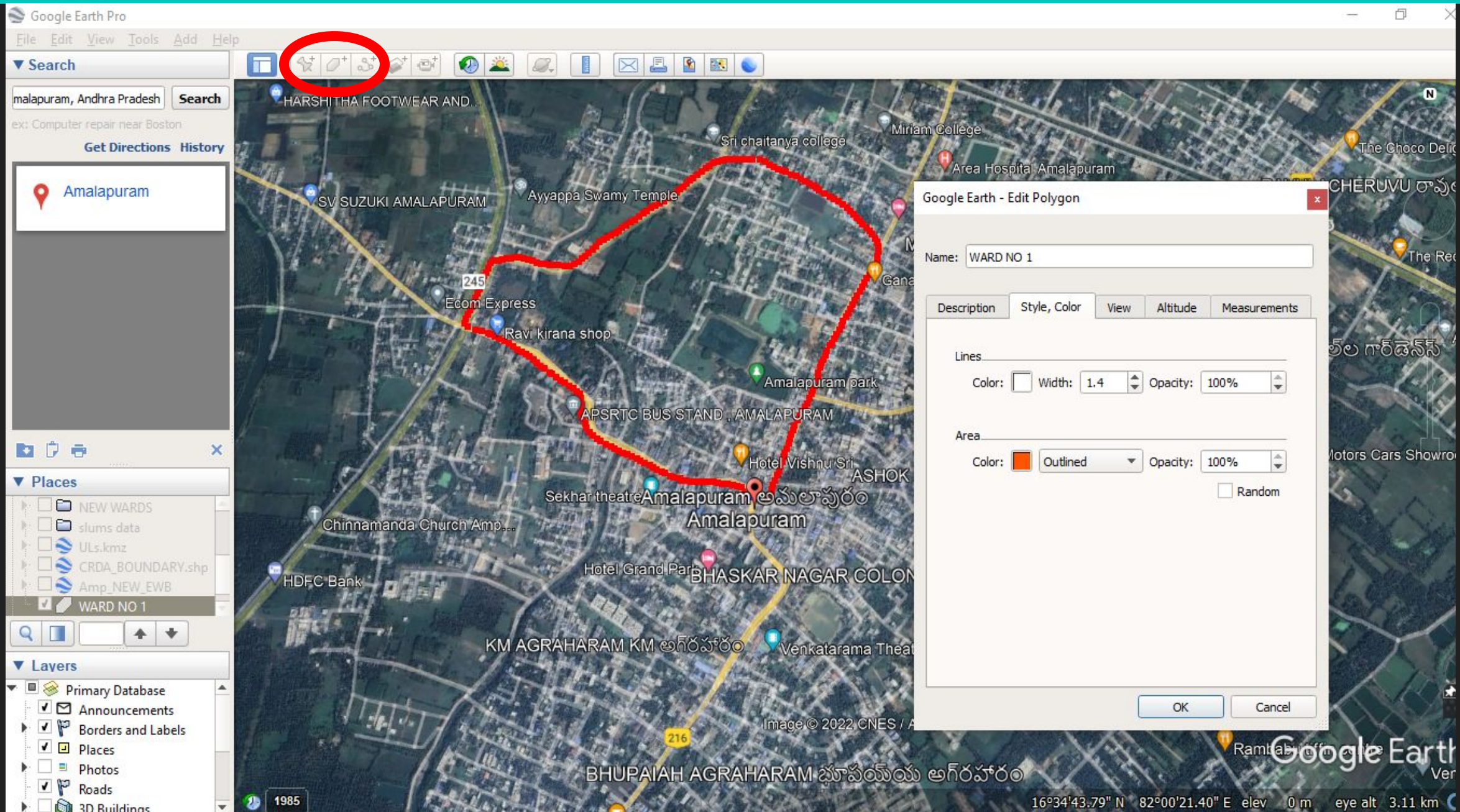
Polygon



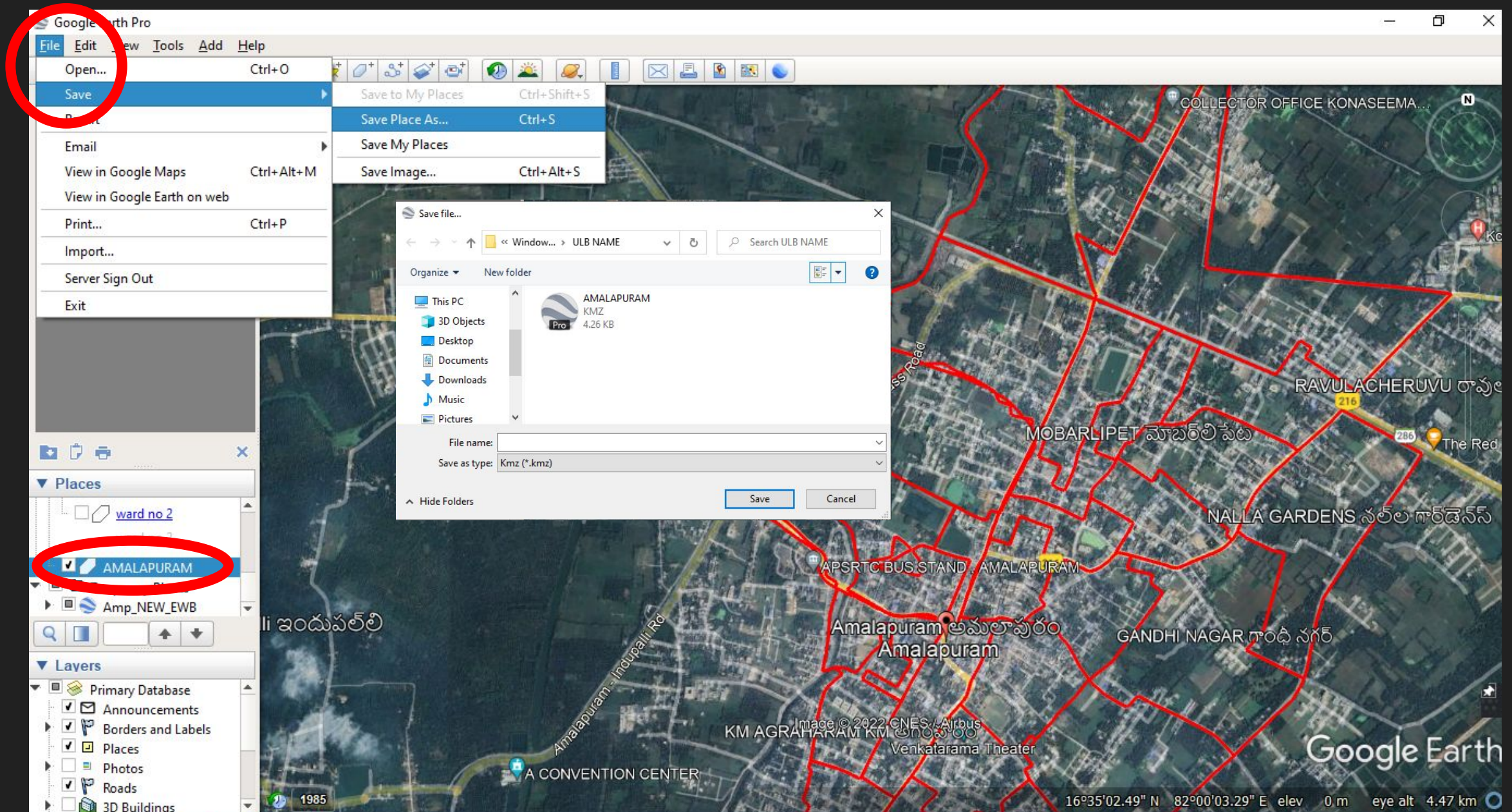
- After entering Location/ULB name, the program takes to the desired location as shown



Then, click on add location option in title bar shown below in highlighted box to add location mark/polygon/line



After completion of polygon drawing, to save the file in KML format. Right Click on given Polygon name or on polygon, select **save place as** option and select file type as **KML** and save the file as shown below..,



Thank you